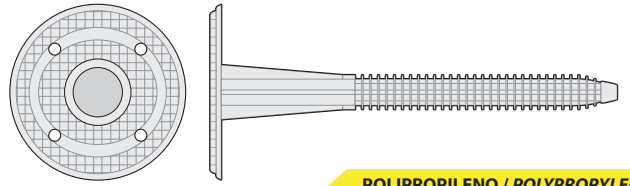


ESPIGA PARA PANEL AISLANTE

EPA ANCHOR FOR INSULATING PANELS FIXING IN CONCRETE
 CHEVILLE POUR PANNEAUX D'ISOLATION SUR BÉTON EPA
 DÜBEL FÜR BEFESTIGUNG VON ISOLIERPLATTE AUF BETON EPA



CAJA / BOX / BOÎTE

POLIPROPILENO / POLYPROPYLENE

CÓDIGO <i>Code / Code</i>	MEDIDA <i>Measure / Mesure</i>	Ø BROCA <i>Drill Ø / Ø Foret</i>	GROSOR A FIJAR <i>Thickness to fix / Épaisseur</i>	
	ØxL m.m.	m.m.	m.m.	
EPA8050	8x50	8	10/20	500
EPA8070	8x70	8	20/40	400
EPA8085	8x85	8	40/60	300
EPA8110	8x110	8	60/80	300

ESPIGA PARA PANEL AISLANTE EPAM

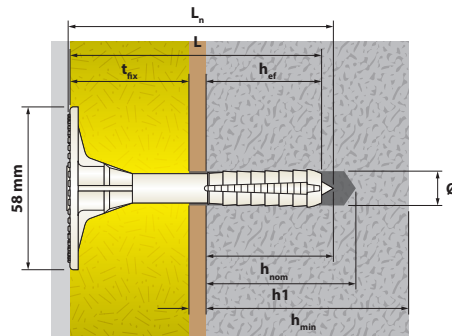
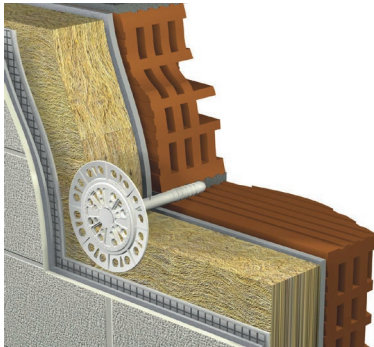
EPAM ANCHOR WITH NAIL FOR INSULATING PANELS FIXING IN CONCRETE
 CHEVILLE AVEC CLOU POUR PANNEAUX D'ISOLATION SUR BÉTON EPAM
 DÜBEL MIT NAGEL FÜR BEFESTIGUNG VON ISOLIERPLATTE AUF BETON EPAM



CAJA / BOX / BOÎTE

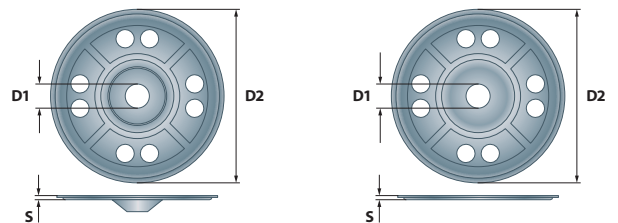
POLIETILENO / POLYETHYLENE

CÓDIGO <i>Code / Code</i>	MEDIDA <i>Measure / Mesure</i>	Ø BROCA <i>Drill Ø / Ø Foret</i>	GROSOR A FIJAR <i>Thickness to fix / Épaisseur</i>	D	h _{ef}	PROF. TALADRO <i>Hole depth / Prof. trou</i>	
	ØxL m.m.	m.m.	t _{fix} m.m.	m.m.	m.m.	h ₁ m.m.	
EPAM10070	10x70	10	30	58	40	50	200
EPAM10090	10x90	10	50	58	40	50	200
EPAM10110	10x110	10	70	58	40	50	200
EPAM10130	10x130	10	90	58	40	50	200
EPAM10150	10x150	10	110	58	40	50	200
EPAM10180	10x180	10	140	58	40	50	200



ARANDELA DE ACERO PARA PANEL AISLANTE

STEEL LARGE WASHER FOR INSULATED PANELS FIXING
 RONDELLE EN ACIER POUR PANNEAUX D'ISOLATION
 SCHEIBE FÜR BEFESTIGUNG VON ISOLIERPLATTE



CAJA / BOX / BOÎTE

CINCADO / ZINC PLATED

CÓDIGO <i>Code / Code</i>	CÓDIGO <i>Code / Code</i>	Ø INTERIOR <i>Inside Ø / Ø Intérieur</i>	Ø EXTERIOR <i>Outside Ø / Ø Extérieur</i>	GROSOR <i>Thickness / Épaisseur</i>	
		D1 m.m.	D2 m.m.	S m.m.	
AVELLANADA <i>Countersunk / Fraise</i>	PLANA <i>Flat / Plat</i>	D1	D2	S	
LU0106	LY0106	6,5	70	0,7	100
LU0109	LY0109	9	70	0,7	100